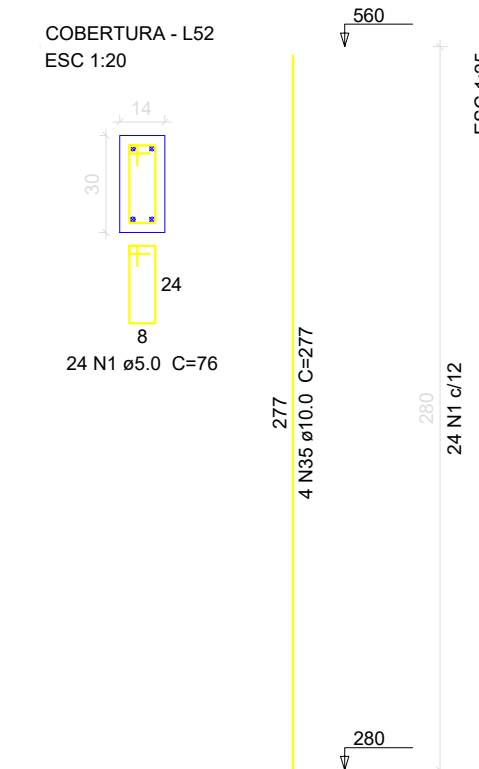
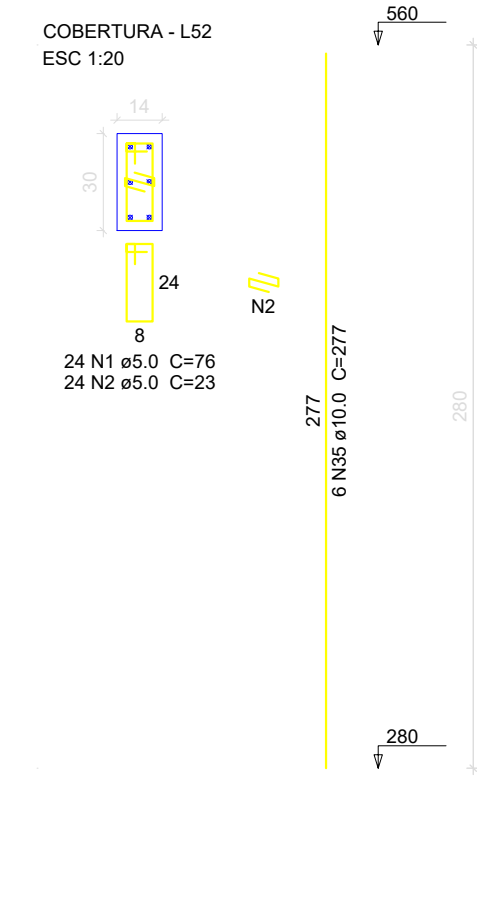


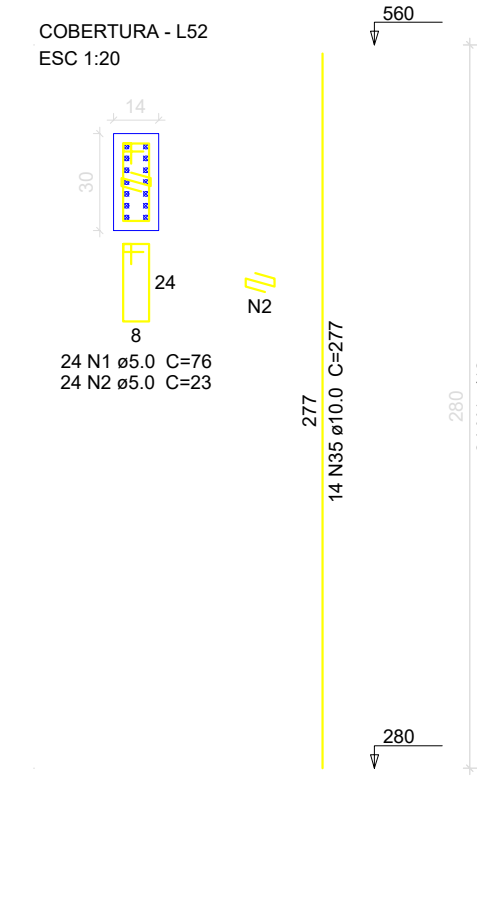
P45=P_2=P_3=P_4=P_5=P_6=
 =P_11=P_12=P_13=P_15=P_16=
 =P_19=P_22=P_23=P_24=P_26=
 =P_27=P_32=P_33=P_34=P_35=
 =P_36=P_37=P_38=P_39=P_40=
 =P_41=P_42=P_43=P_44



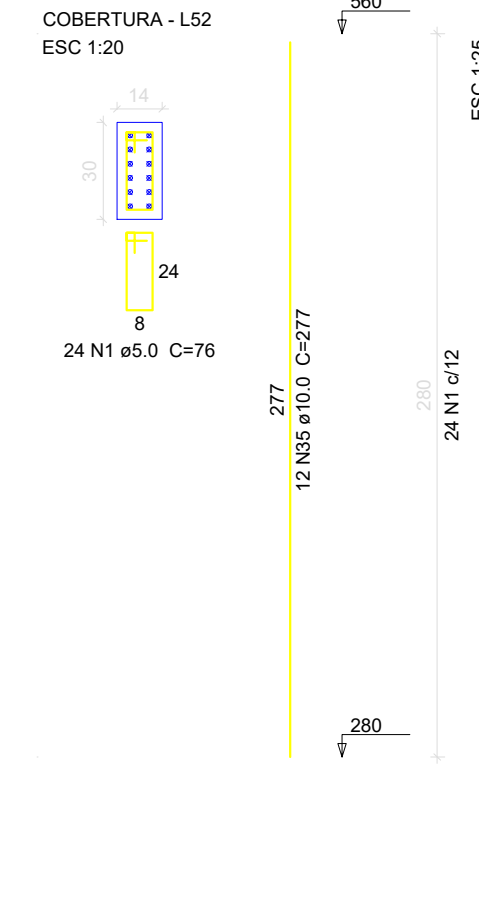
P_1=P_14=P_25



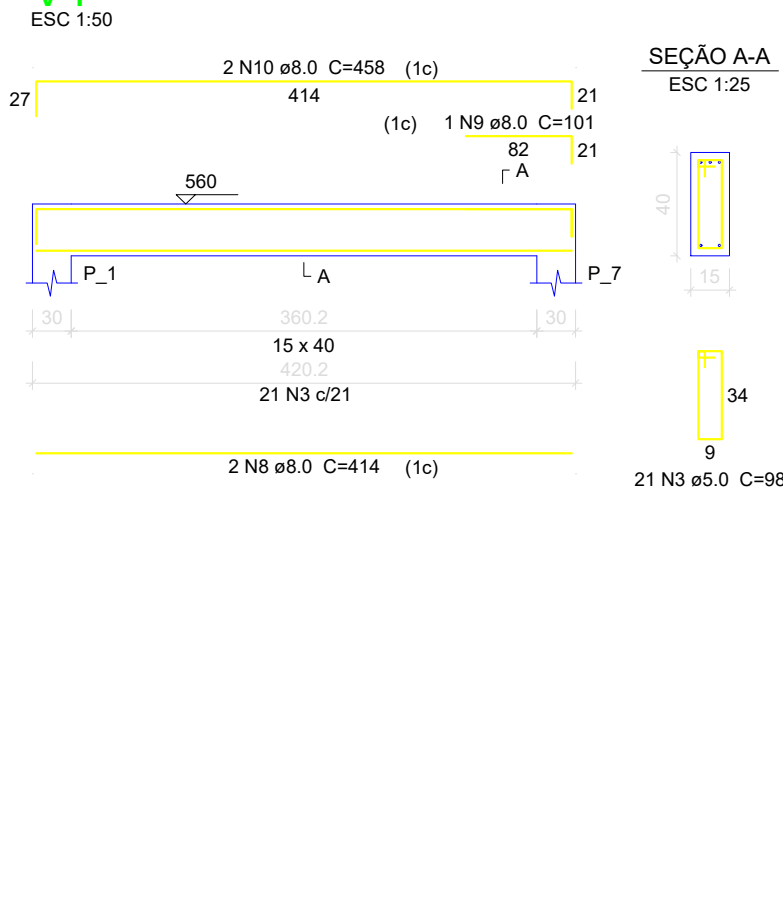
P_8=P_9=P_29



P_30



V1



Relação do aço

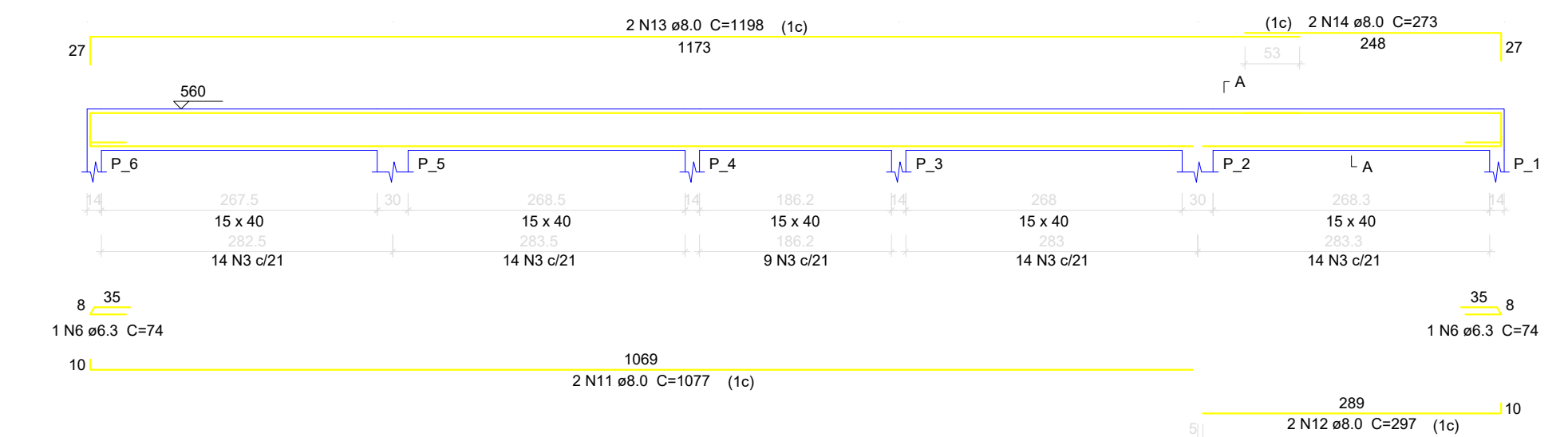
30xP45	P_30	V3	V6	V9	V13	3xP_1	V1	V2	V5	V8	V12	C.UNIT (cm)	C.TOTAL (cm)
1	5.0	888	76	67488									
2	5.0	144	23	3312									
3	5.0	474	98	46452									
4	5.0	2	221	442									
5	5.0	2	235	470									
6	6.3	2	74	148									
7	6.3	1	108	108									
8	8.0	4	414	1656									
9	8.0	1	101	101									
10	8.0	2	453	916									
11	8.0	2	1077	2154									
12	8.0	2	297	594									
13	8.0	5	1198	5990									
14	8.0	2	273	546									
15	8.0	1	169	169									
16	8.0	2	461	922									
17	8.0	2	514	1028									
18	8.0	1	131	131									
19	8.0	2	557	1114									
20	8.0	4	828	3312									
21	8.0	2	205	410									
22	8.0	2	881	1762									
23	8.0	2	208	416									
24	8.0	2	907	1814									
25	8.0	2	773	1546									
26	8.0	2	481	962									
27	8.0	2	190	380									
28	8.0	1	281	281									
29	8.0	1	155	155									
30	8.0	2	1079	2158									
31	8.0	2	915	1830									
32	8.0	2	345	690									
33	8.0	2	804	1608									
34	8.0	2	854	1708									
35	10.0	192	277	5314									
36	10.0	1	178	178									
37	10.0	2	873	1746									
38	10.0	1	321	321									
39	10.0	3	608	1824									
40	10.0	2	272	544									
41	10.0	2	278	556									
42	10.0	1	320	320									
43	10.0	3	607	1821									
44	10.0	2	1183	2366									
45	10.0	2	211	422									
46	16.0	2	147	294									
47	16.0	2	315	630									
48	16.0	2	294	588									
49	16.0	2	154	308									

Resumo do aço

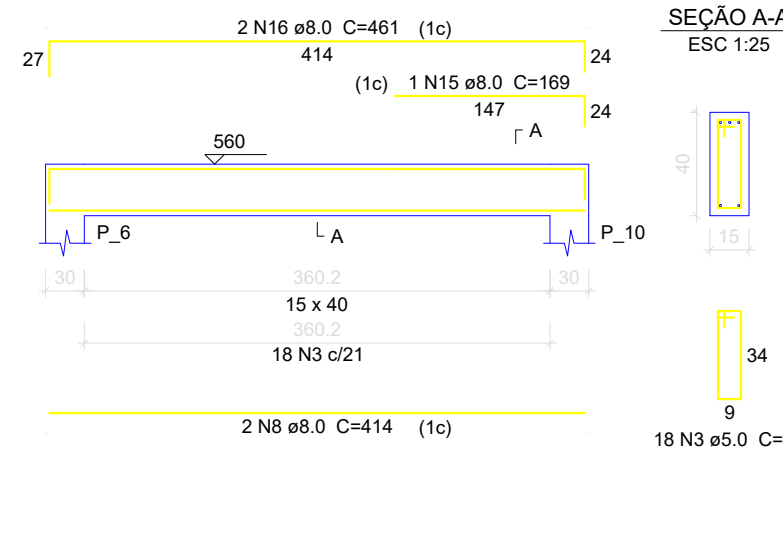
AOÇO	DIAM (mm)	C.TOTAL (m)	PESO + 10% (kg)
CA50	6.3	2.6	0.7
	8.0	343.7	149.2
	10.0	632.9	429.2
	16.0	18.2	31.6
CA60	5.0	1181.7	200.3

Volume de concreto (C-25) = 10.39 m³
 Área de forma = 186.74 m²

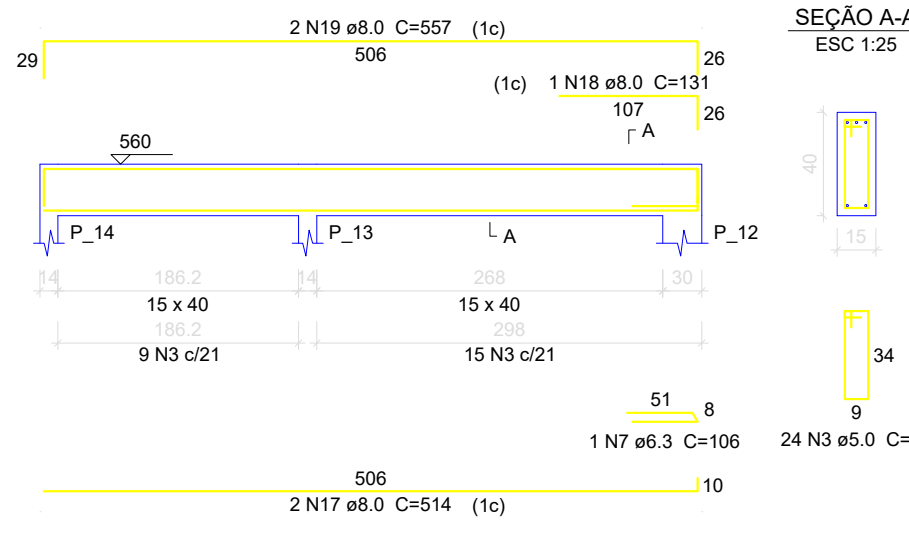
V2



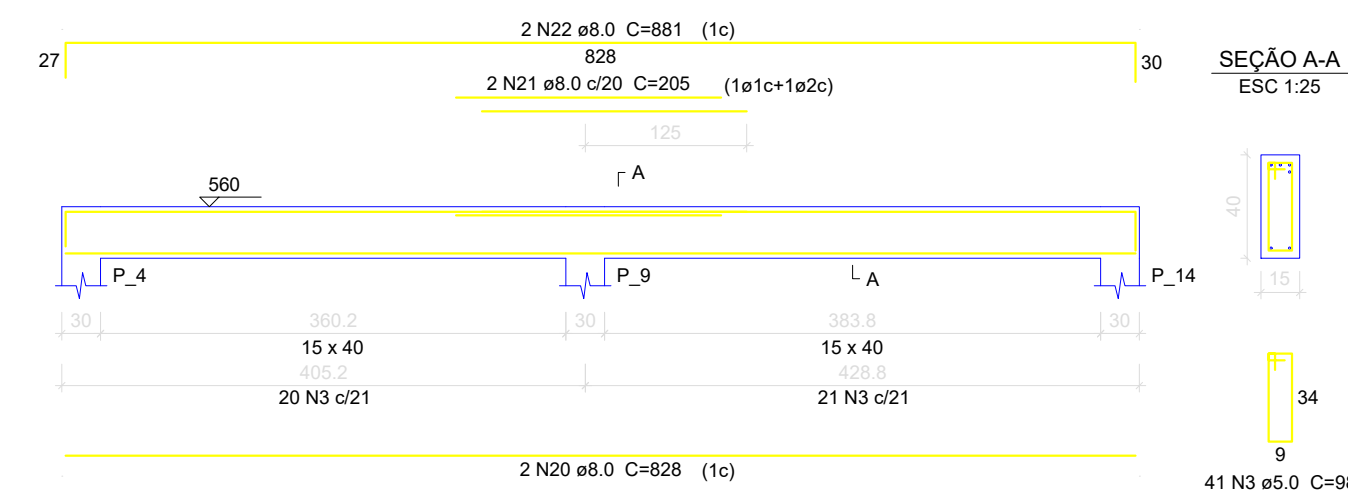
V3



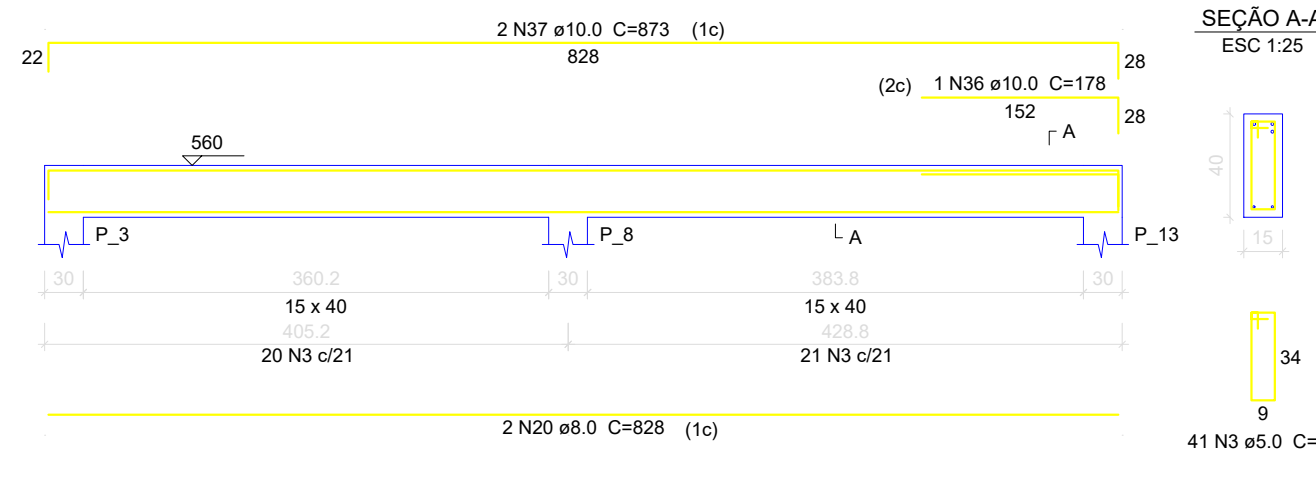
V4



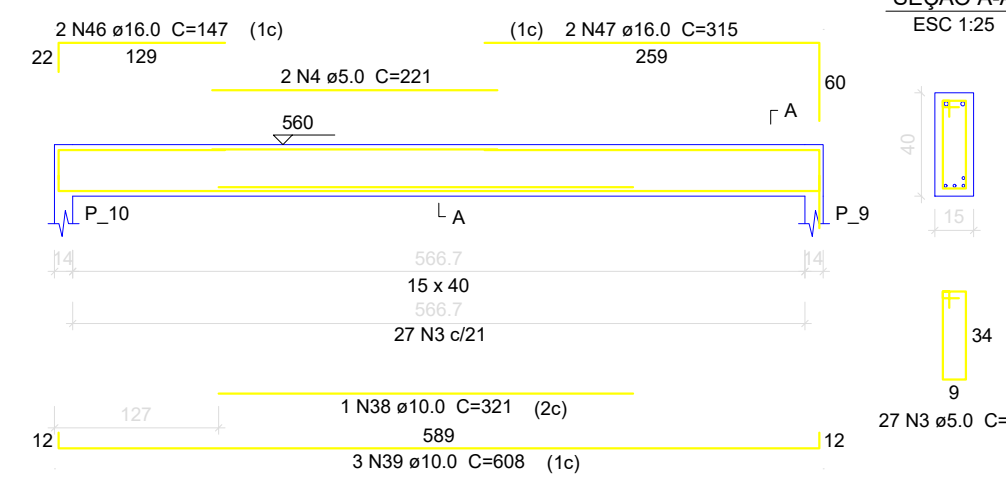
V5



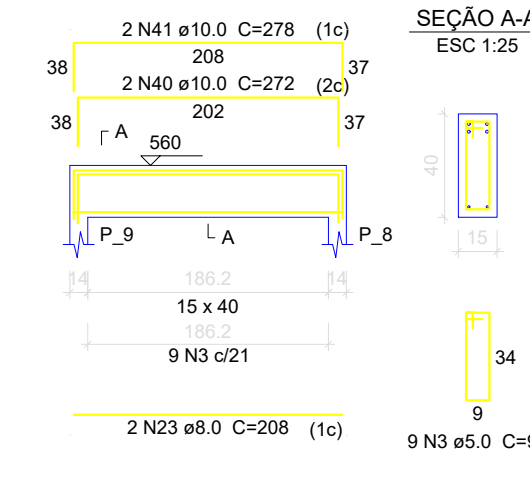
V6



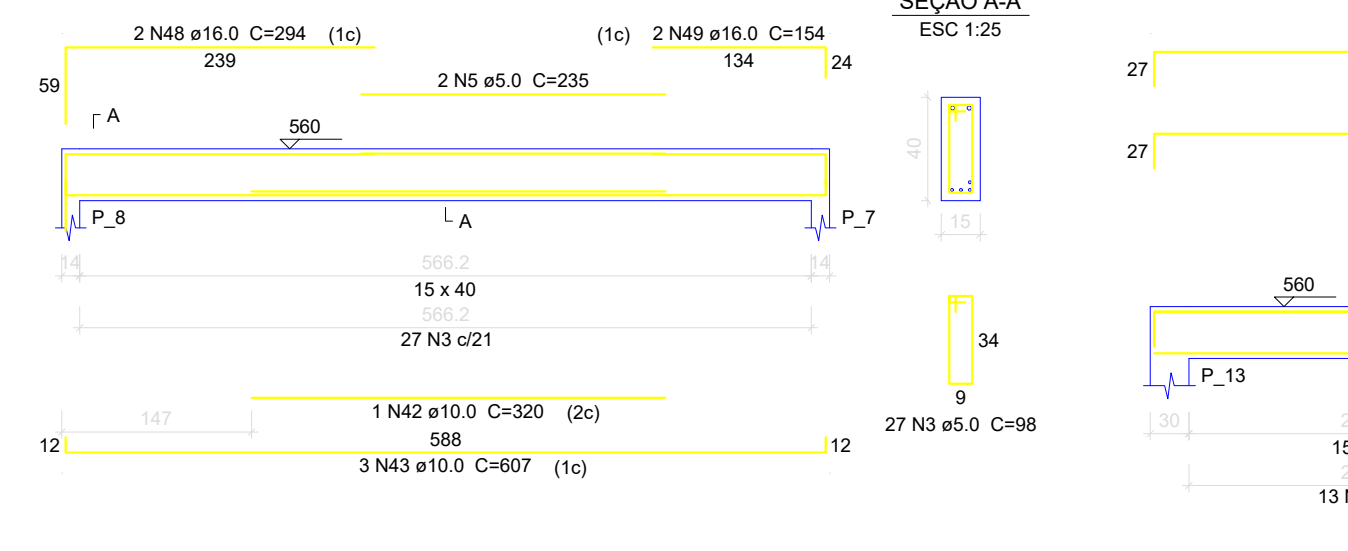
V7



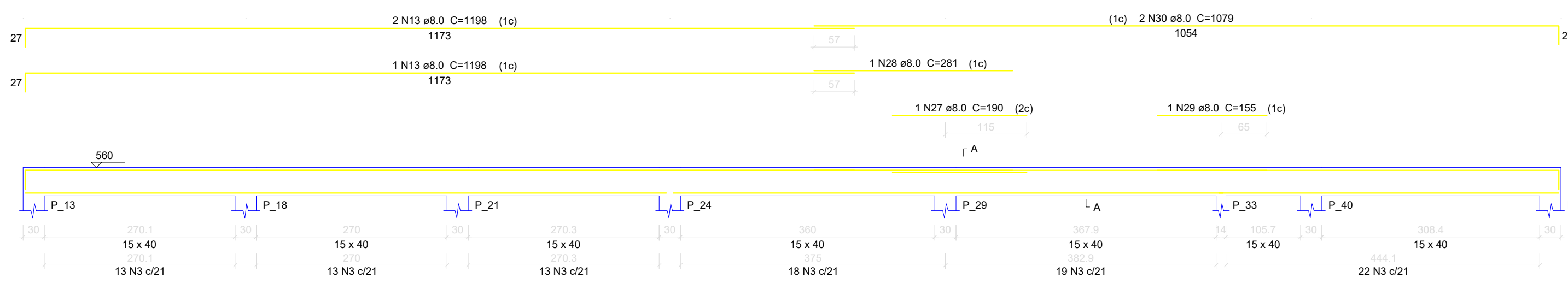
V8



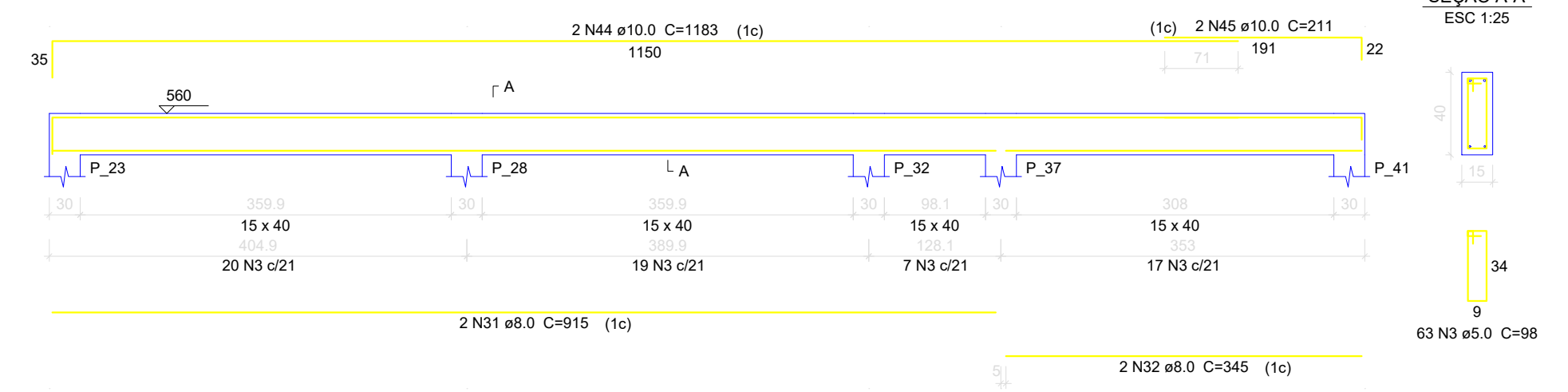
V9



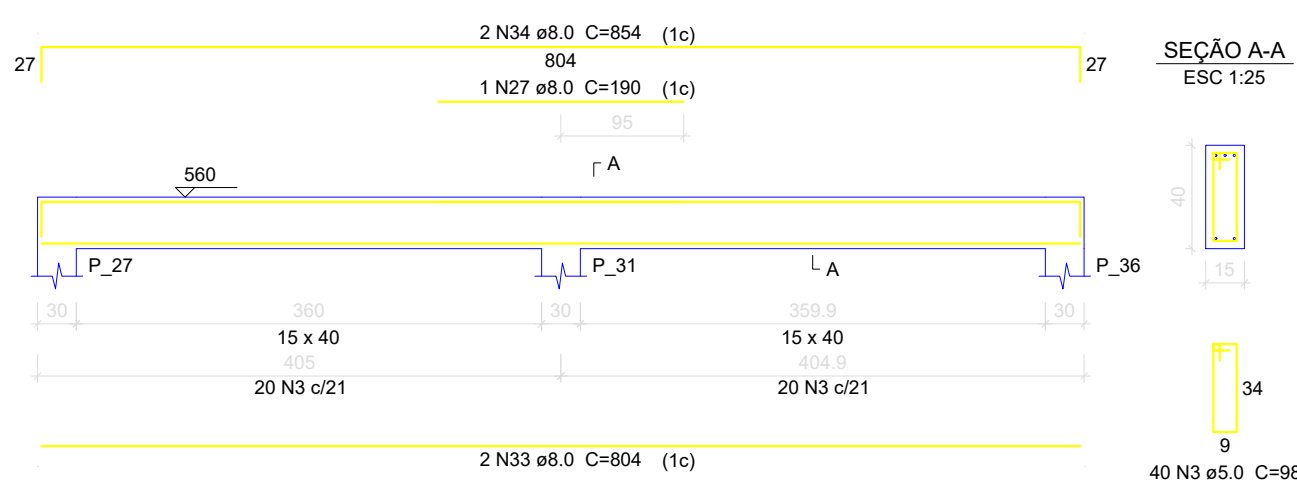
V11

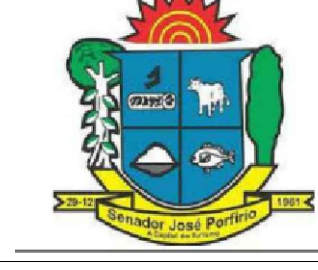


V12



V13



CLIENTE: PREFEITURA MUNICIPAL DE SENADOR JOSÉ PORFÍRIO CNPJ: 05.421.110/0001-40		EST-11/16
OBRA: ESCOLA PADRÃO RURAL 04 SALAS VILA MOCOTÓ		
	PROJETO DE ARQUITETURA	VERSÃO: 00
	DESENHO: PLANTA BAIXA	INÍCIO: JUNHO/2022
ESCALA: 1 / 100	REVISÃO 00	TÉRMINO: AGOSTO/ 2022
EQUIPE TÉCNICA DO PROJETO		
Responsável Projeto: Josiel Napoleão Santos filho CREA: 93.559/089A	Projetista e Coordenação Técnica: DEPARTAMENTO DE ENGENHARIA	Tec. Projetista CAD: