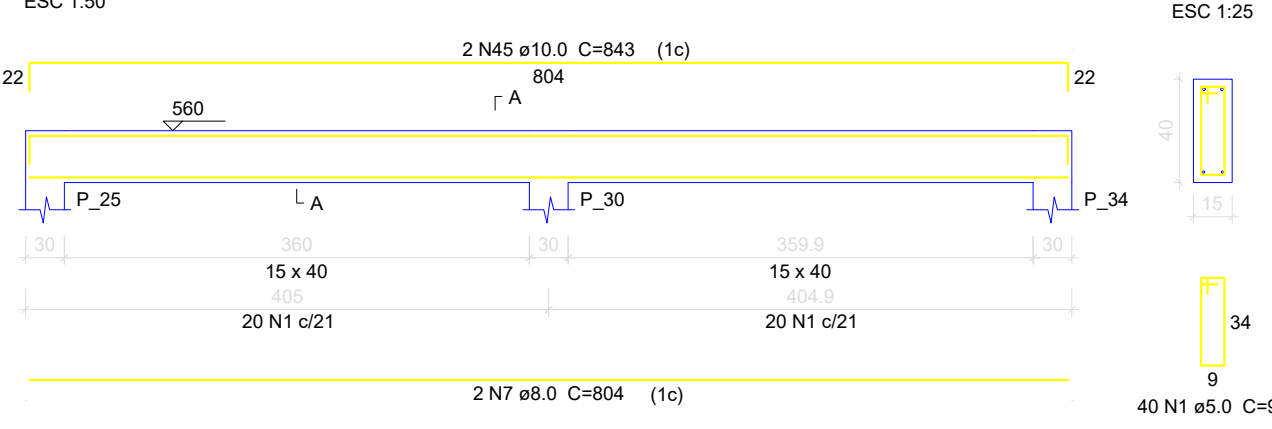
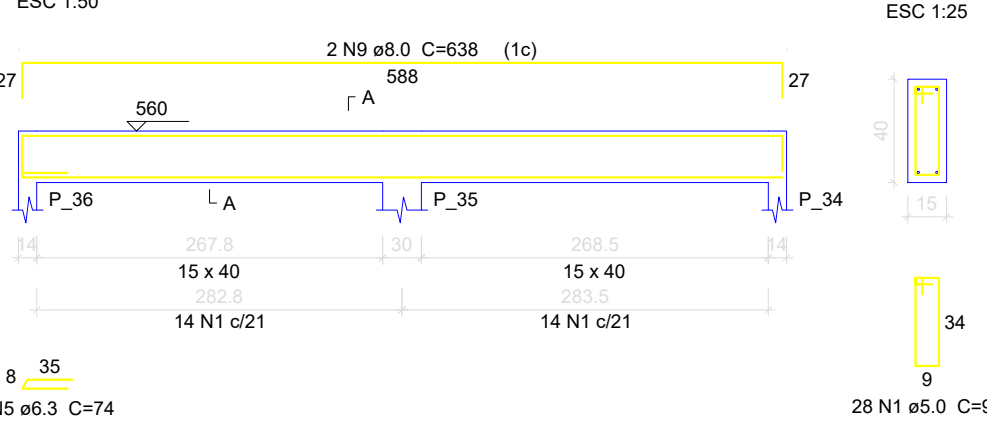


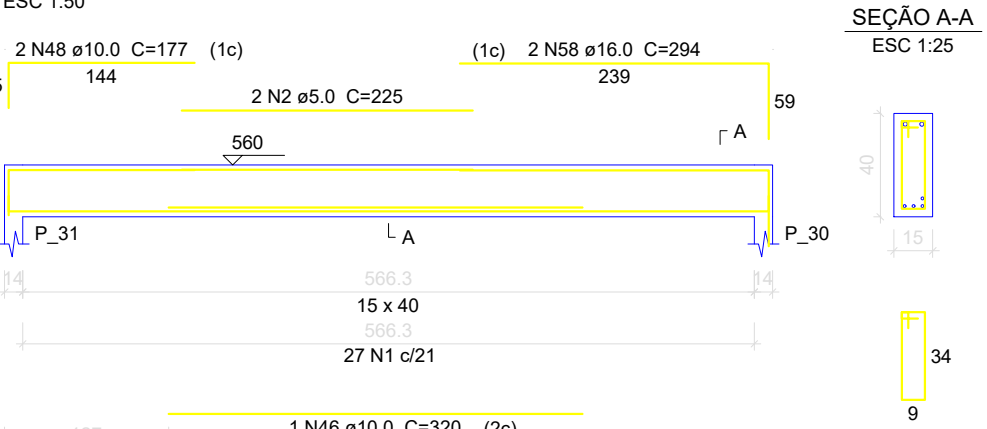
V14



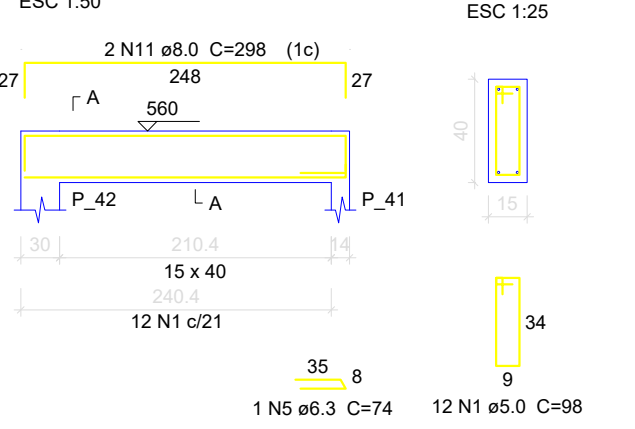
V16



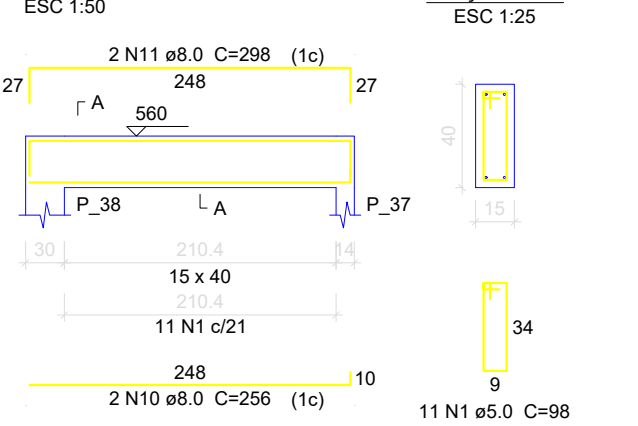
V17



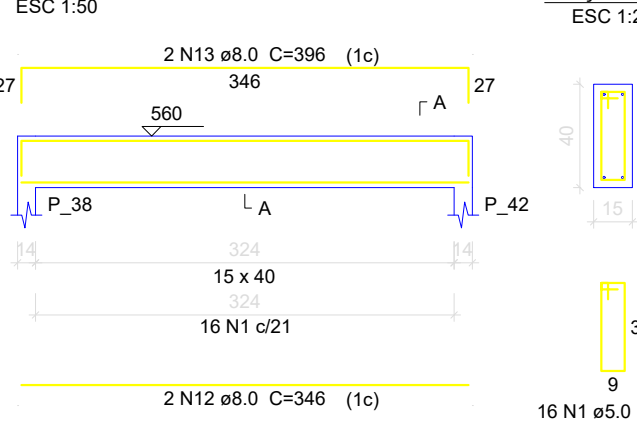
V18



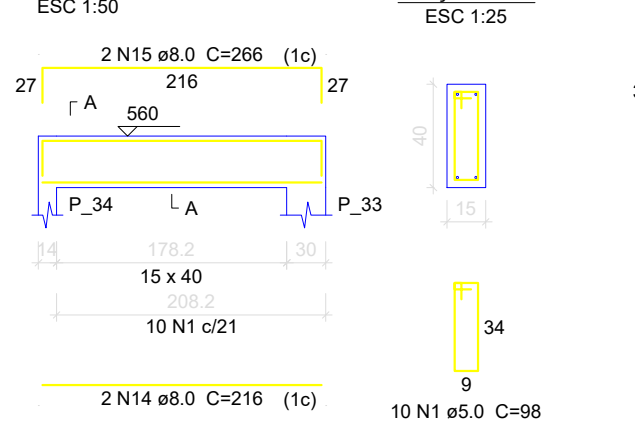
V19



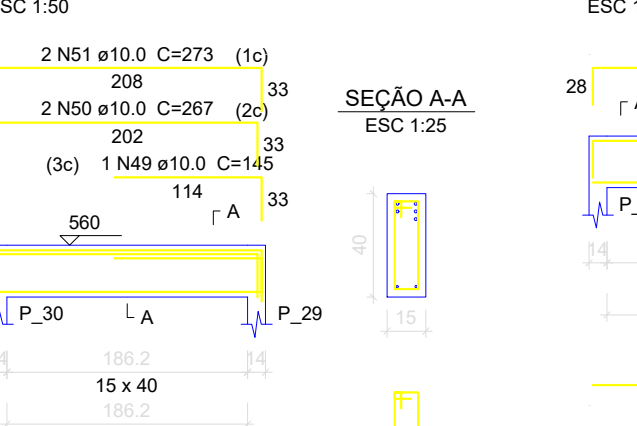
V21



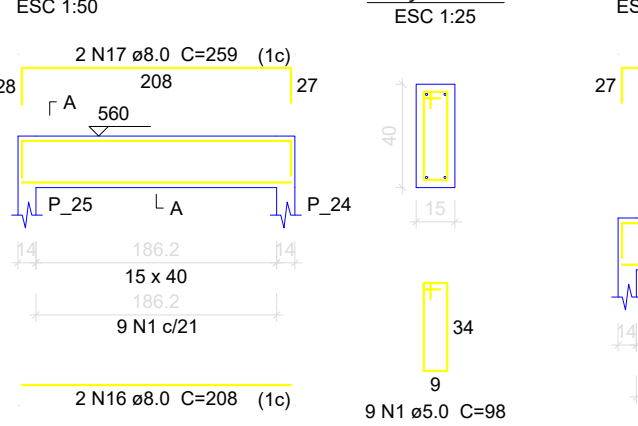
V22



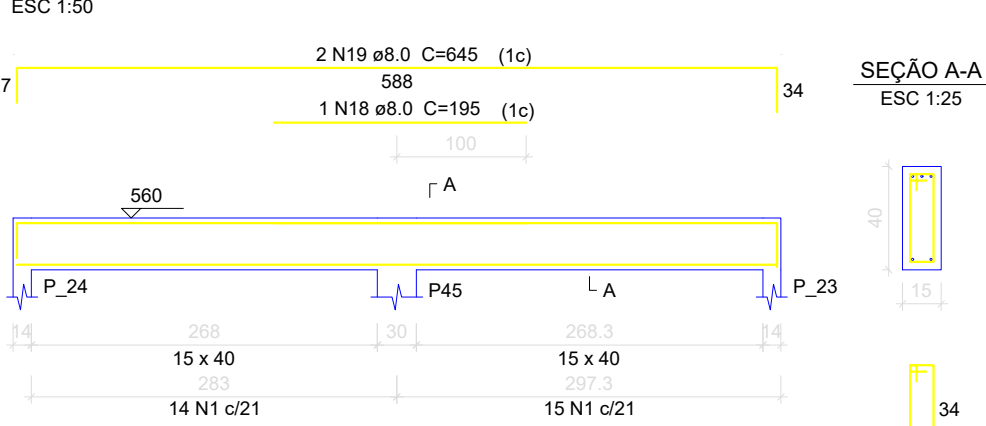
V23



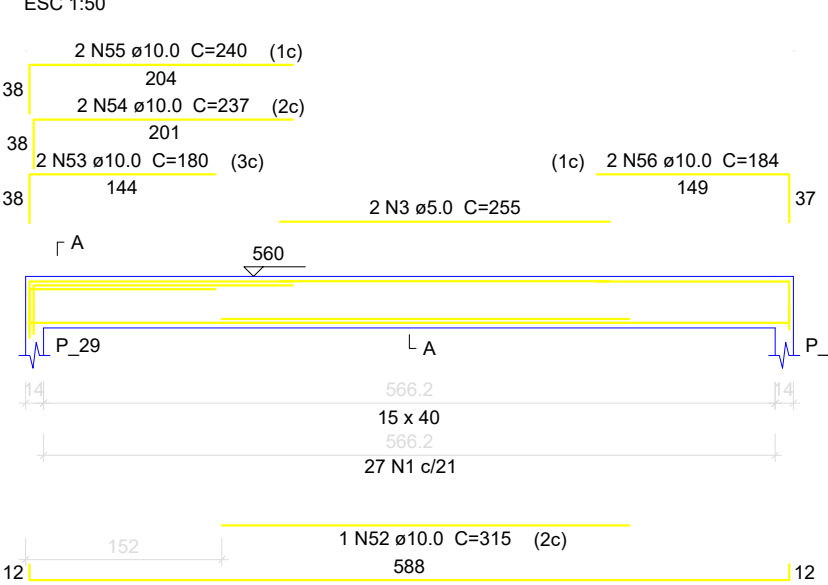
V24



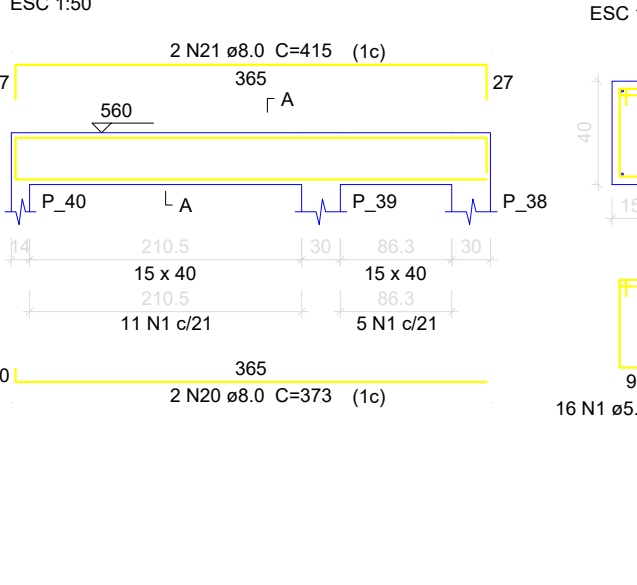
V25



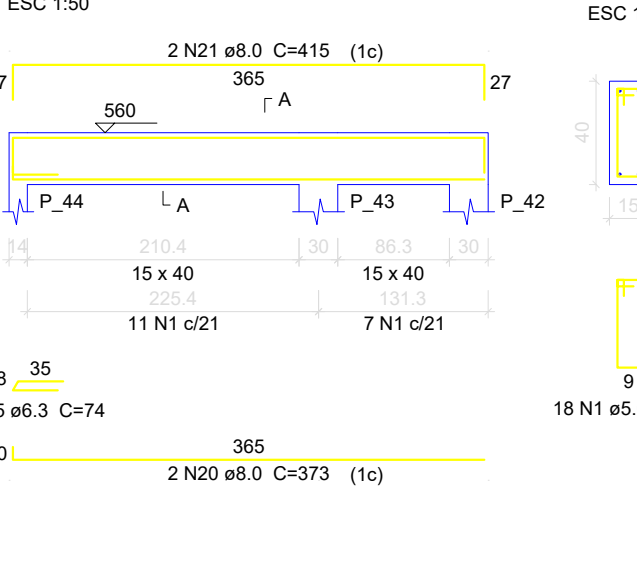
V26



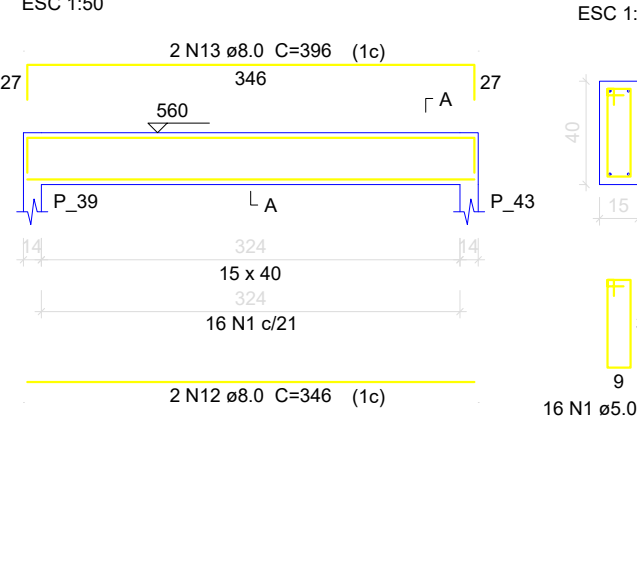
V27



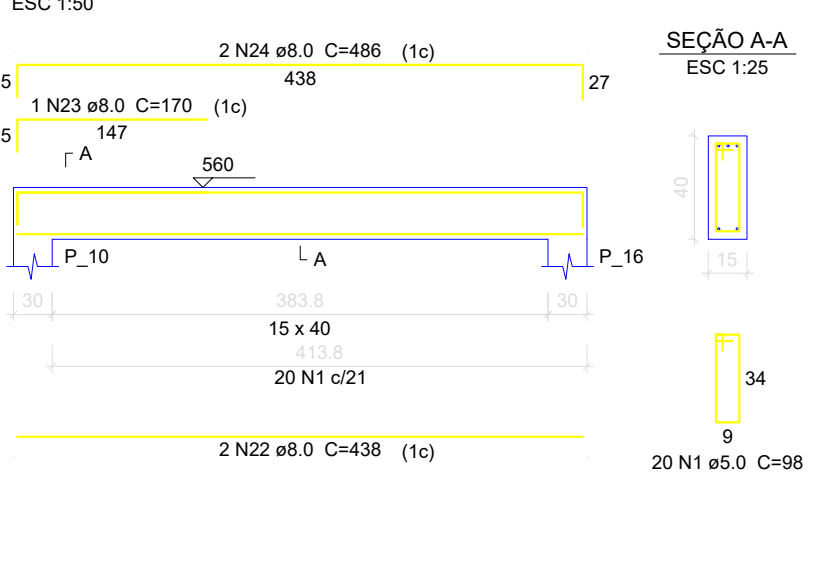
V28



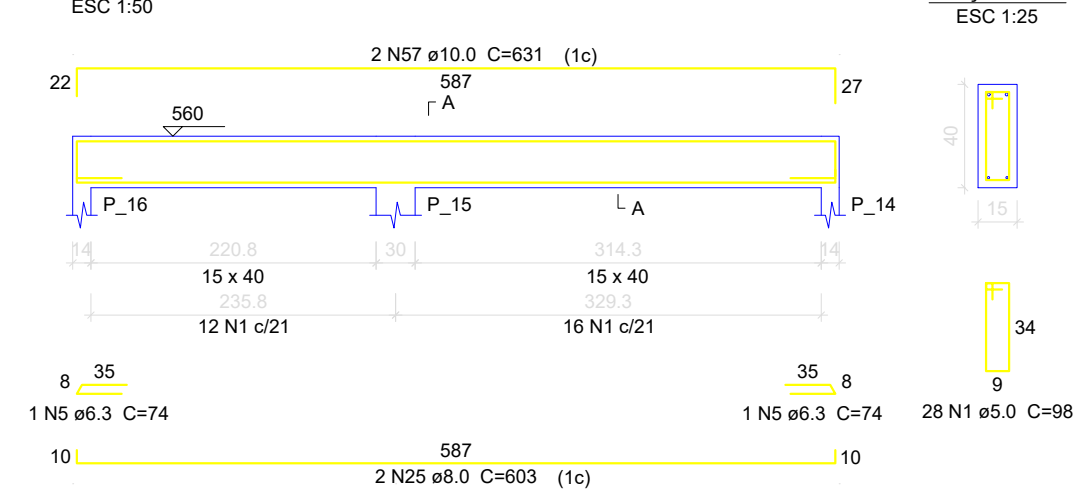
V29



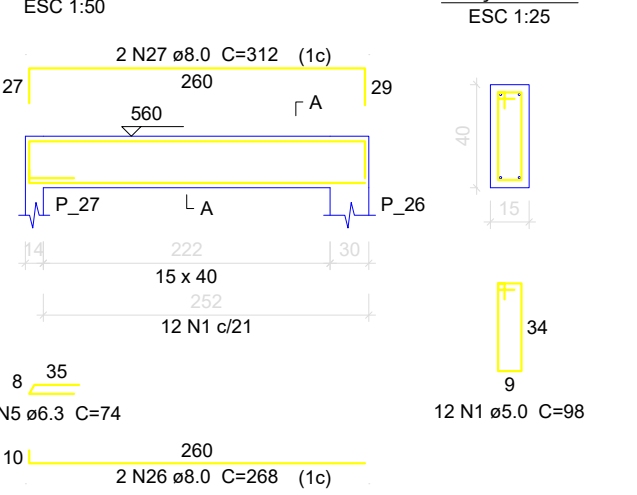
V30



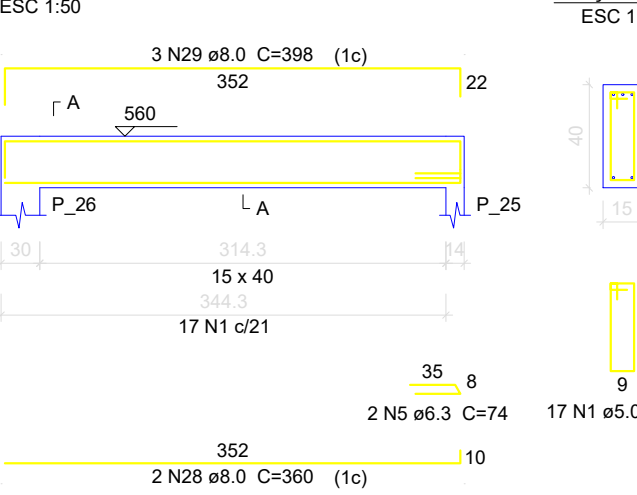
V31



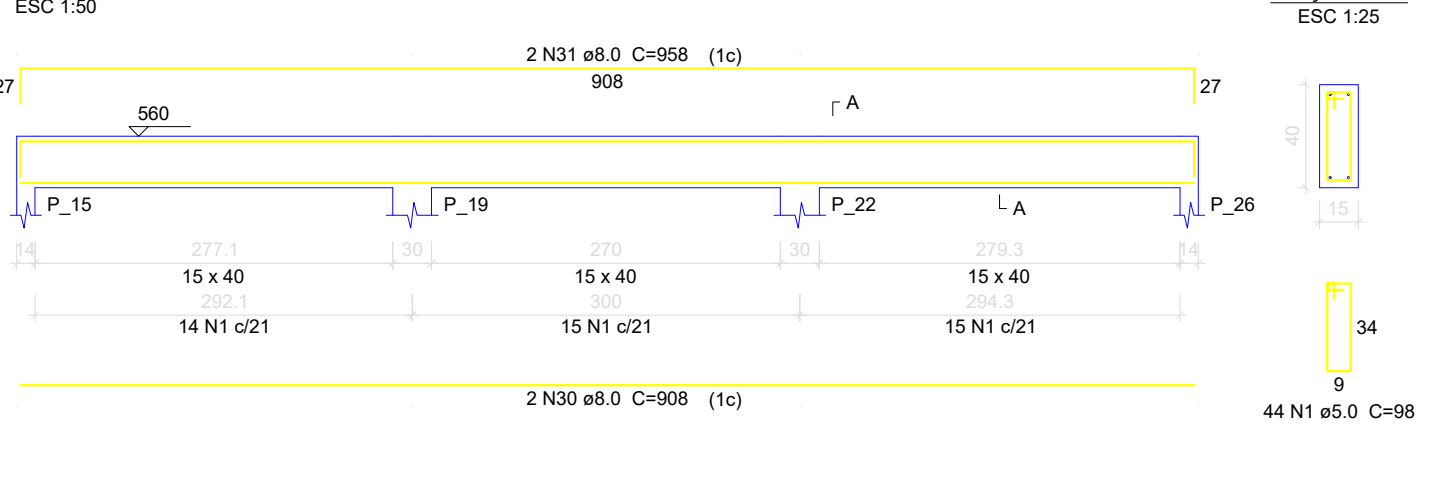
V32



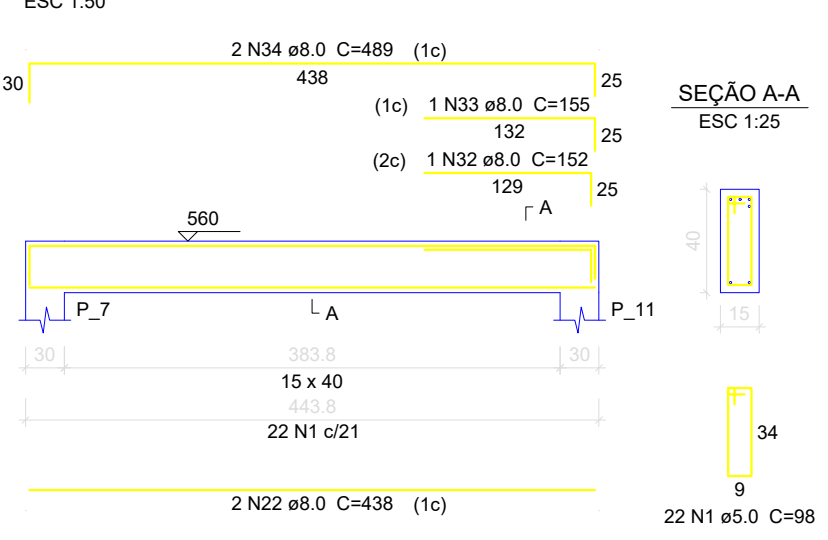
V33



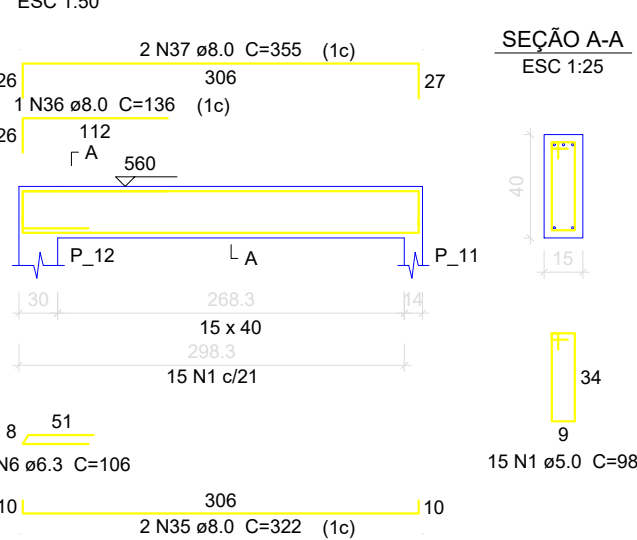
V34



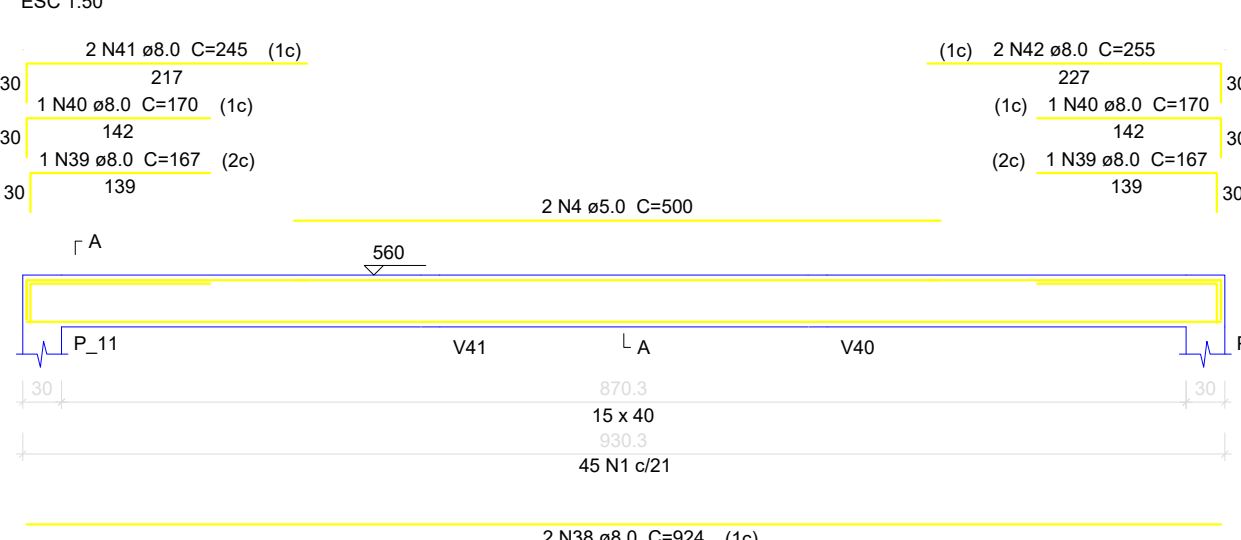
V36



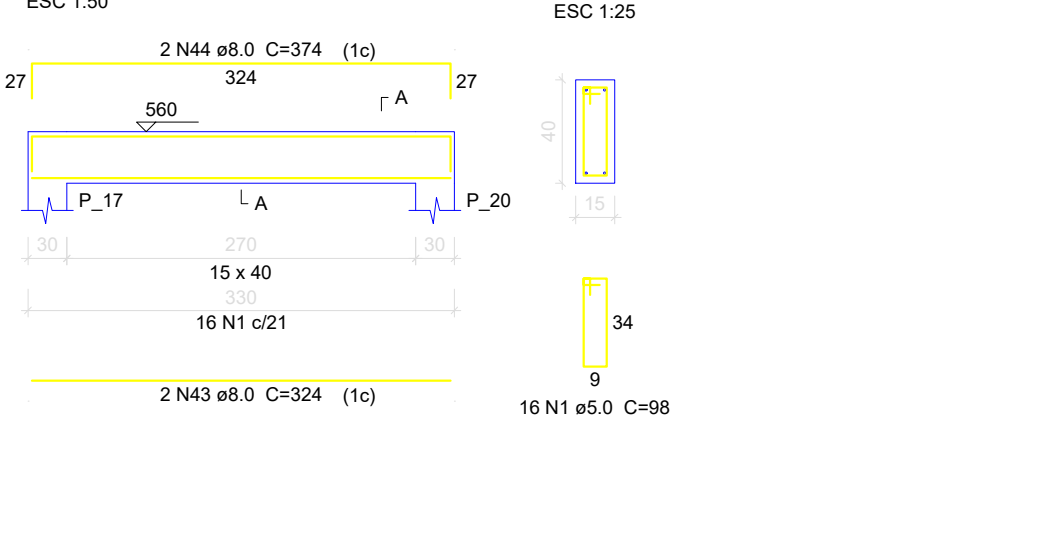
V37



V38



V39



Relação do aço

AÇO	N	DIAM (mm)	QUANT	C.UNIT (cm)	C.TOTAL (cm)
V14	1	5.0	487	98	47728
V18	2	5.0	2	225	450
V22	3	5.0	2	255	510
V25	4	5.0	2	500	1000
V28	5	6.3	6	74	592
V31	6	6.3	1	106	106
V34	7	8.0	2	804	1608
V38	8	8.0	4	596	2384
V39	9	8.0	2	638	1276
V19	10	8.0	4	256	1024
V21	11	8.0	4	298	1192
V23	12	8.0	4	346	1384
V24	13	8.0	4	396	1584
V26	14	8.0	2	216	432
V27	15	8.0	2	266	532
V29	16	8.0	4	298	1192
V30	17	8.0	2	259	518
V32	18	8.0	1	195	195
V33	19	8.0	2	345	690
V36	20	8.0	4	373	1492
V37	21	8.0	4	415	1660
V38	22	8.0	4	438	1752
V39	23	8.0	2	170	340
V16	24	8.0	2	486	972
V17	25	8.0	2	603	1206
V18	26	8.0	2	268	536
V19	27	8.0	2	312	624
V20	28	8.0	2	360	720
V21	29	8.0	3	398	1194
V22	30	8.0	2	508	1016
V23	31	8.0	2	958	1916
V24	32	8.0	1	152	152
V25	33	8.0	1	155	155
V26	34	8.0	2	489	978
V27	35	8.0	2	322	644
V28	36	8.0	1	136	136
V29	37	8.0	2	355	710
V30	38	8.0	2	924	1848
V31	39	8.0	2	167	334
V32	40	8.0	2	170	340
V33	41	8.0	2	245	490
V34	42	8.0	2	255	510
V36	43	8.0	2	324	648
V37	44	8.0	2	374	748
V38	45	10.0	2	843	1686
V39	46	10.0	1	320	320
V14	47	10.0	6	607	3642
V18	48	10.0	2	177	354
V22	49	10.0	1	145	145
V25	50	10.0	2	267	534
V28	51	10.0	2	273	546
V31	52	10.0	1	315	315
V34	53	10.0	2	180	360
V37	54	10.0	2	237	474
V38	55	10.0	2	240	480
V39	56	10.0	2	184	368
V14	57	10.0	2	631	1262
V18	58	16.0	2	294	588

Resumo do aço

AÇO	DIAM (mm)	C.TOTAL (m)	PESO + 10% (kg)
CA50	6.3	7	1.9
	8.0	360.1	156.3
	10.0	104.9	71.1
	16.0	5.9	10.2
CA60	5.0	496.9	84.2
PESO TOTAL (kg)			
CA50		239.5	
CA60		84.2	

Volume de concreto (C-25) = 6.23 m³
Área de forma = 98.64 m²

CLIENTE: PREFEITURA MUNICIPAL DE SENADOR JOSÉ PORFÍRIO
CNPJ: 05.421.110/0001-40
OBRA: ESCOLA PADRÃO RURAL 04 SALAS VILA MOCOTÓ

EST-12/16

PROJETO DE ARQUITETURA
DESENHO: **PLANTA BAIXA**
ESCALA: 1/100
REVISÃO: 00

VERSÃO: 00
INÍCIO: JUNHO/2022
TÉRMINO: AGOSTO/2022
CONTROLE ARQUIVO: 2022 V.03SJP

EQUIPE TÉCNICA DO PROJETO
Responsável Projeto: Josélei Ribeiro dos Santos filho
Projeta e Coordenação Técnica: DEPARTAMENTO DE ENGENHARIA
Tec. Projeta CAD:

