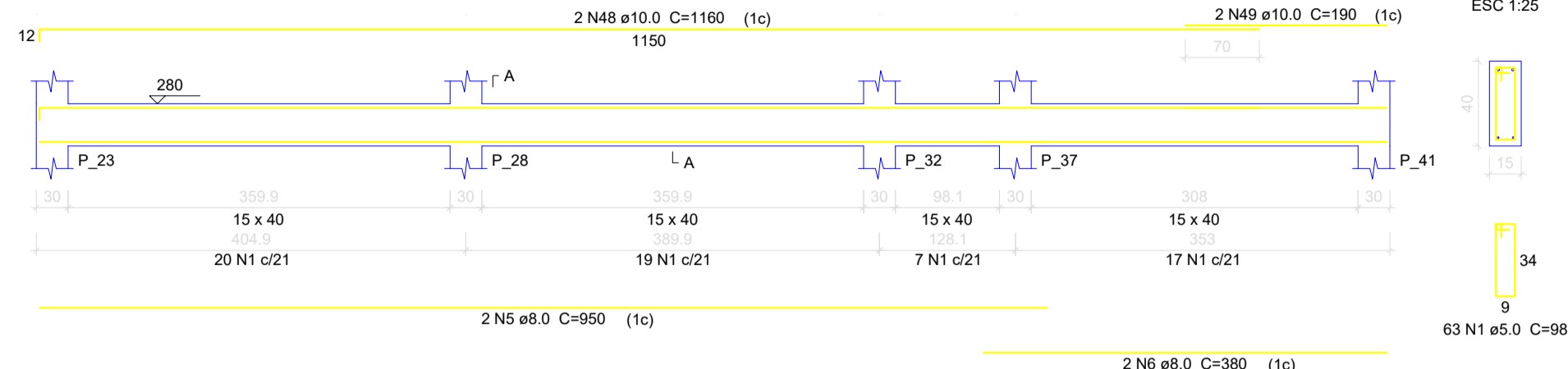
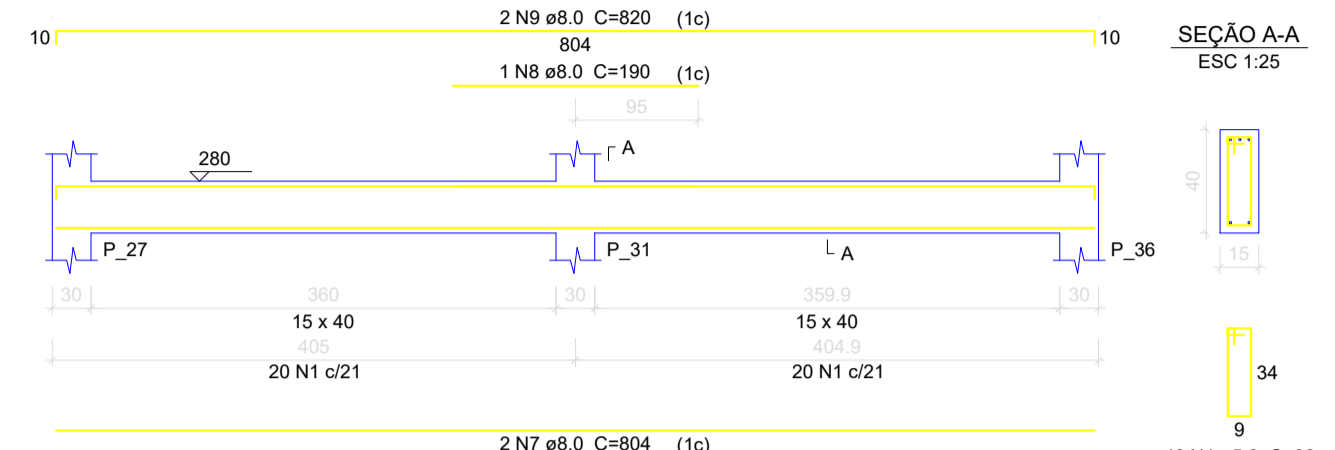


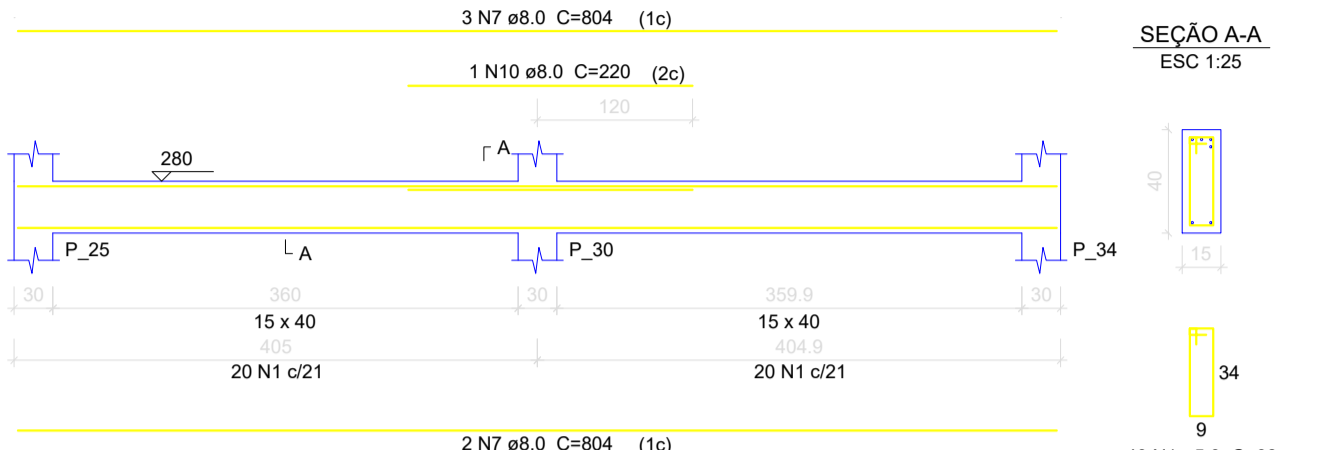
V12
ESC 1:50



V13
ESC 1:50



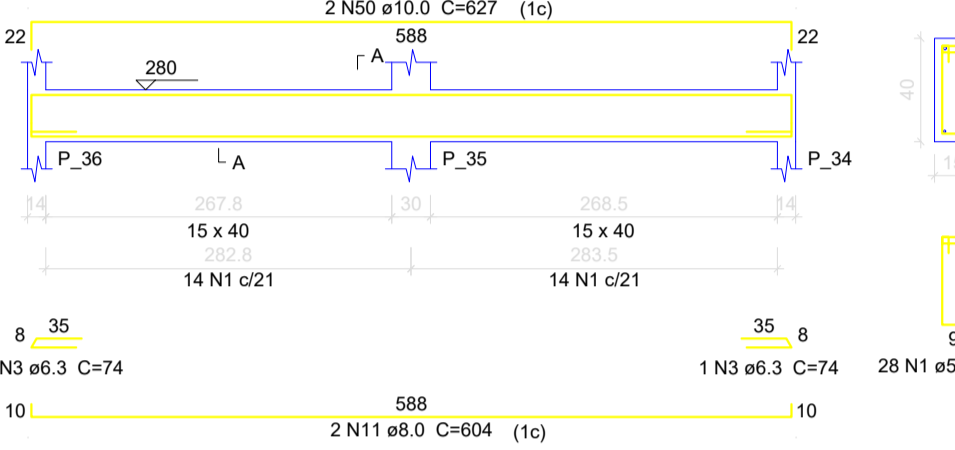
V14
ESC 1:50



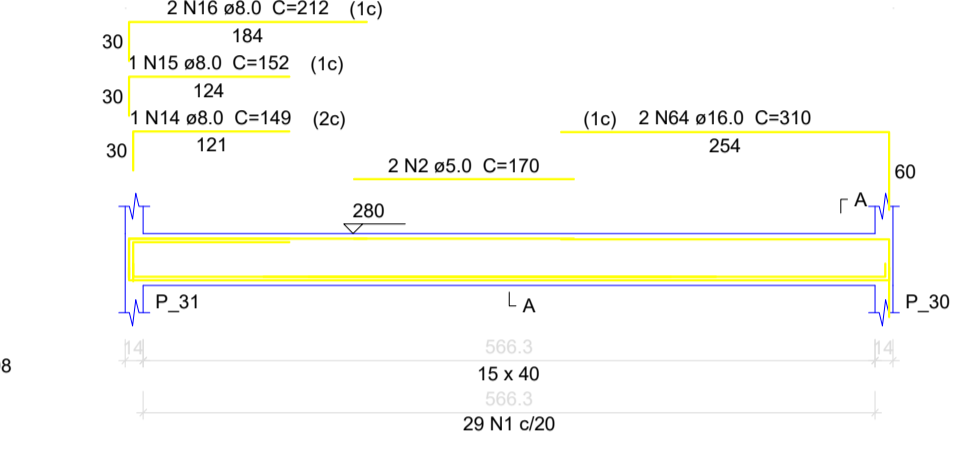
Relação do aço

CAÇO	N	DIAM (mm)	QUANT	C.UNIT (cm)	C.TOTAL (cm)
V12	1	8.0	530	98	51940
V16	1	8.0	2	170	340
V19	3	6.3	9	74	666
V23	4	6.3	1	106	106
V26	5	8.0	2	950	1900
V29	6	8.0	2	380	760
V30	7	8.0	7	804	5628
V32	8	8.0	1	190	190
V36	9	8.0	2	820	1640
	10	8.0	1	220	220
	11	8.0	7	604	4228
	12	8.0	2	315	630
	13	8.0	1	598	598
	14	8.0	1	149	149
	15	8.0	1	152	152
	16	8.0	2	212	424
	17	8.0	4	256	1024
	18	8.0	4	273	1092
	19	8.0	1	92	92
	20	8.0	4	346	1384
	21	8.0	4	396	1584
	22	8.0	3	224	672
	23	8.0	1	107	107
	24	8.0	2	241	482
	25	8.0	4	208	832
	26	8.0	2	259	518
	27	8.0	1	385	385
	28	8.0	4	381	1524
	29	8.0	1	226	226
	30	8.0	2	396	796
	31	8.0	1	203	203
	32	8.0	2	390	780
	33	8.0	6	436	2616
	34	8.0	2	117	234
	35	8.0	1	102	102
	36	8.0	1	378	378
	37	8.0	2	603	1206
	38	8.0	2	268	536
	39	8.0	1	142	142
	40	8.0	1	145	145
	41	8.0	2	293	586
	42	8.0	2	360	720
	43	8.0	2	924	1848
	44	8.0	1	460	460
	45	8.0	2	968	1936
	46	8.0	3	446	1338
	47	8.0	2	322	644
	48	10.0	2	1190	2380
	49	10.0	2	190	380
	50	10.0	2	627	1254
	51	10.0	2	271	542
	52	10.0	2	277	554
	53	10.0	2	300	600
	54	10.0	2	632	1264
	55	10.0	1	320	320
	56	10.0	3	607	1821
	57	10.0	1	255	255
	58	10.0	2	640	1280
	59	10.0	1	147	147
	60	10.0	2	394	788
	61	12.5	2	216	432
	62	12.5	2	668	1336
	63	12.5	2	363	726
	64	16.0	2	310	620

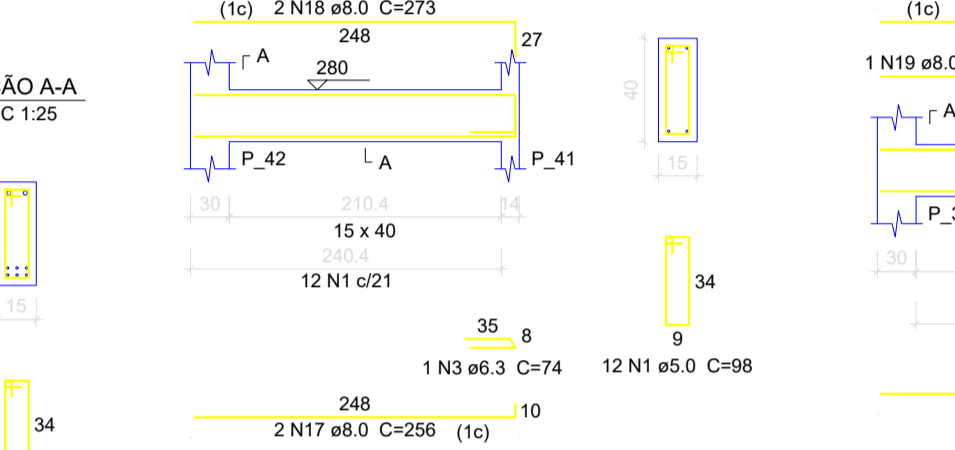
V16
ESC 1:50



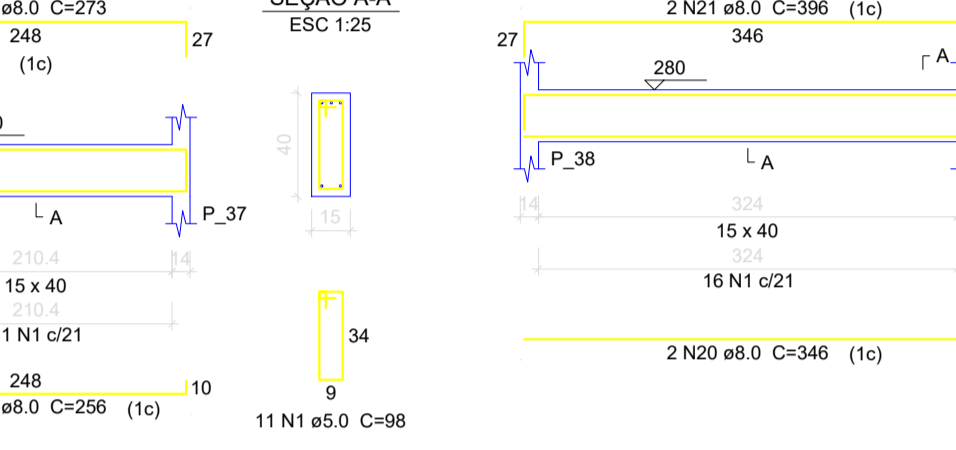
V17
ESC 1:50



V18
ESC 1:50



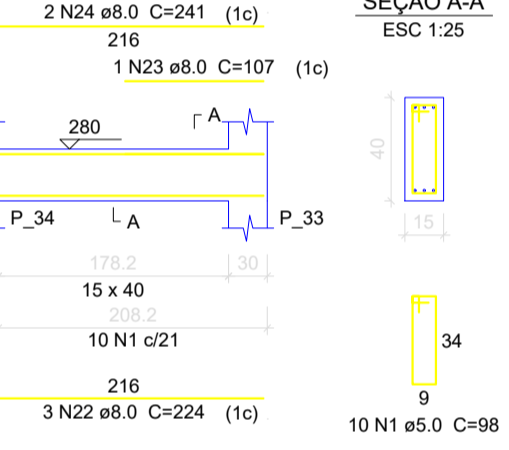
V19
ESC 1:50



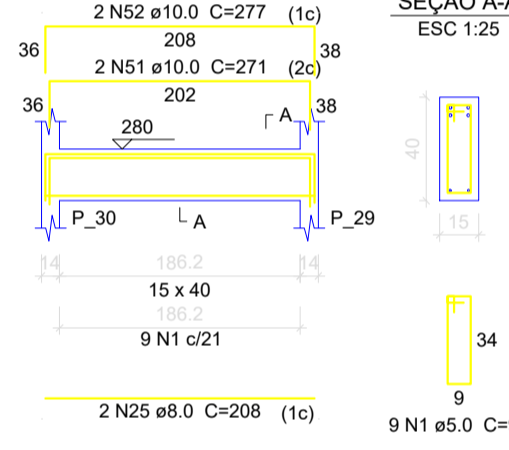
V21
ESC 1:50



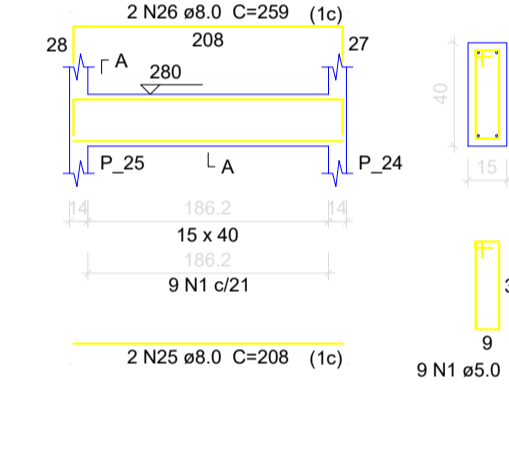
V22
ESC 1:50



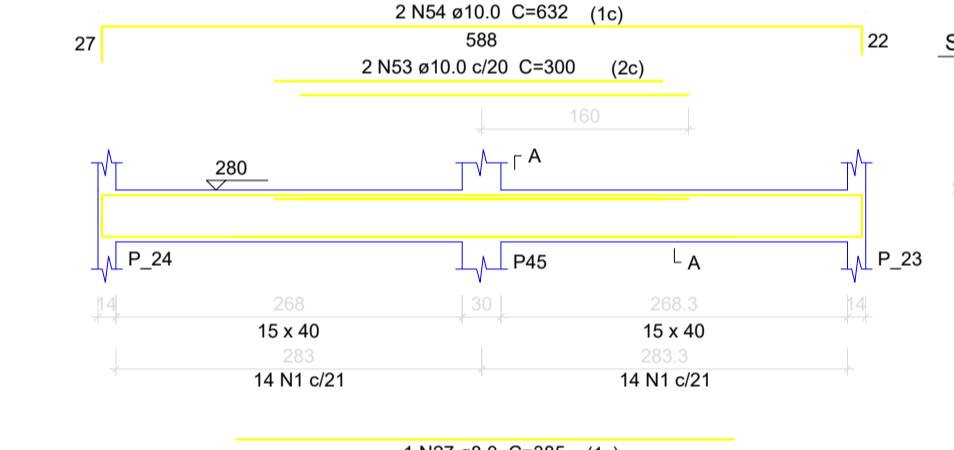
V23
ESC 1:50



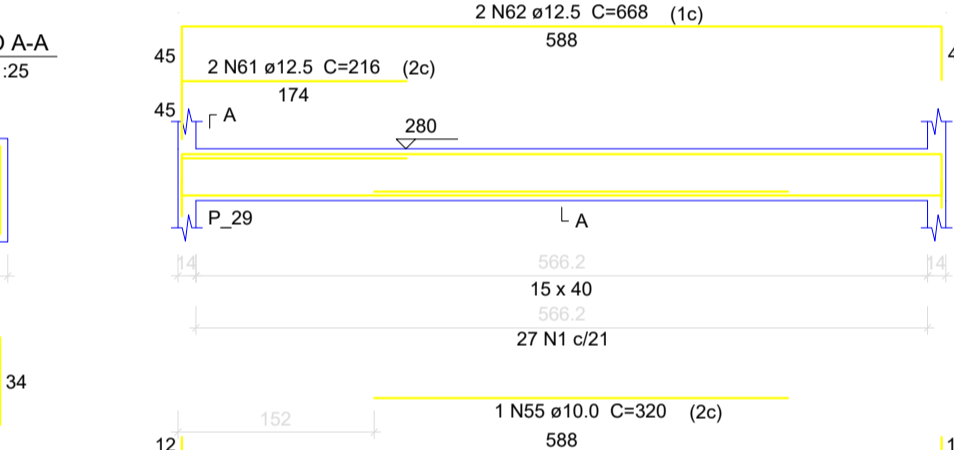
V24
ESC 1:50



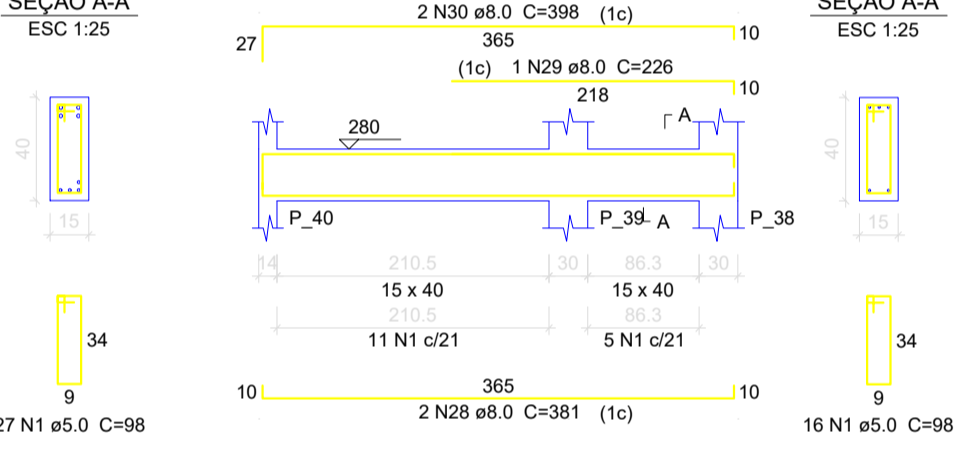
V25
ESC 1:50



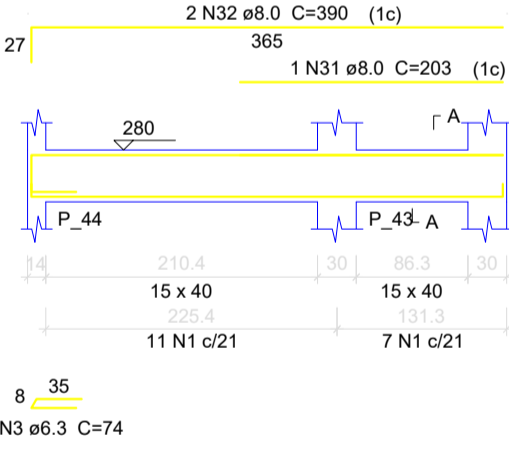
V26
ESC 1:50



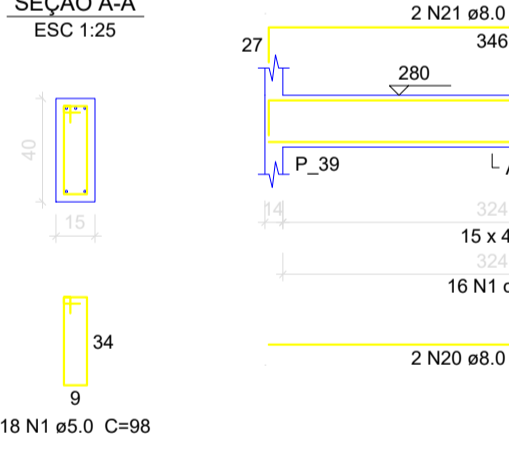
V27
ESC 1:50



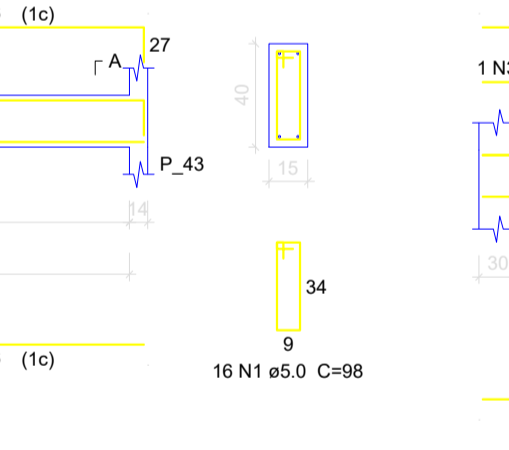
V28
ESC 1:50



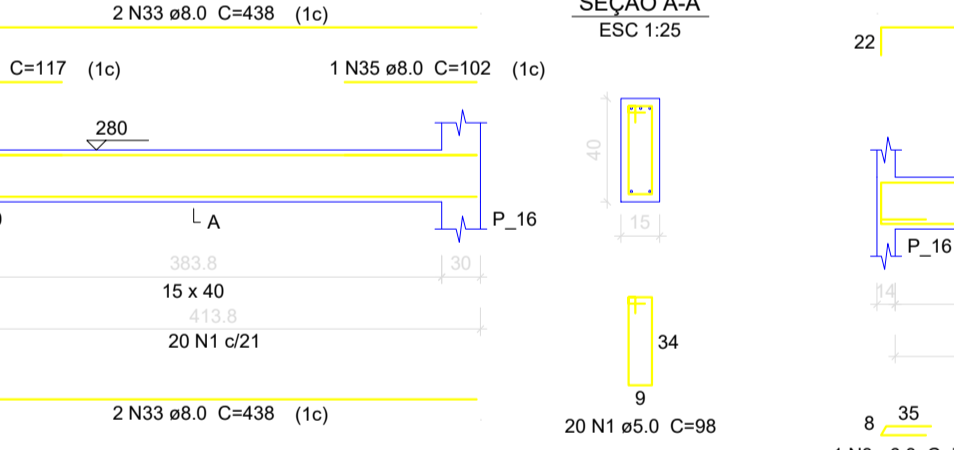
V29
ESC 1:50



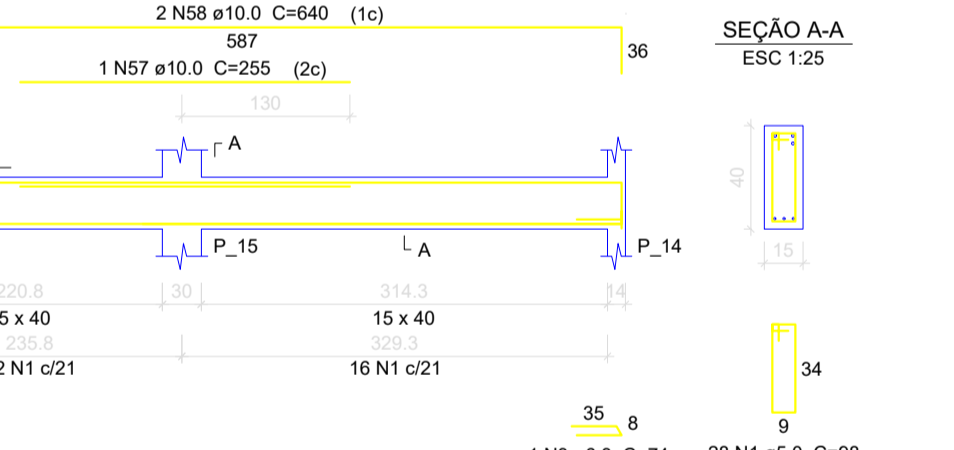
V30
ESC 1:50



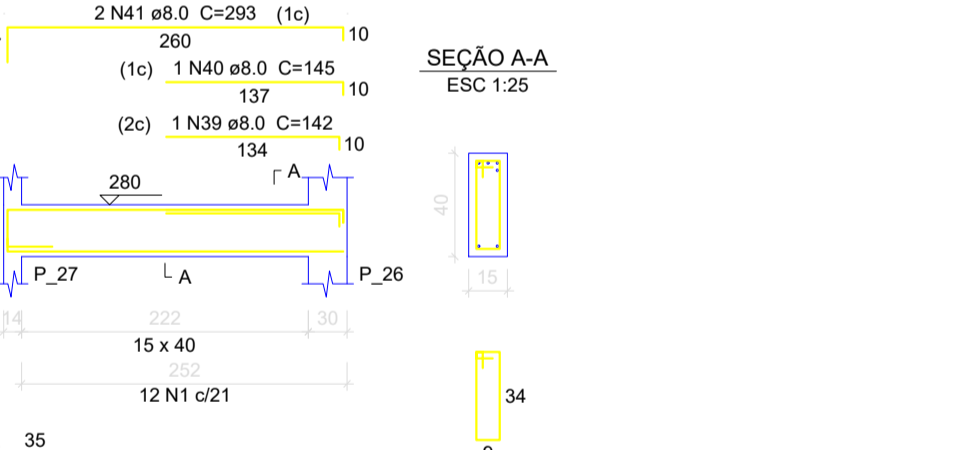
V31
ESC 1:50



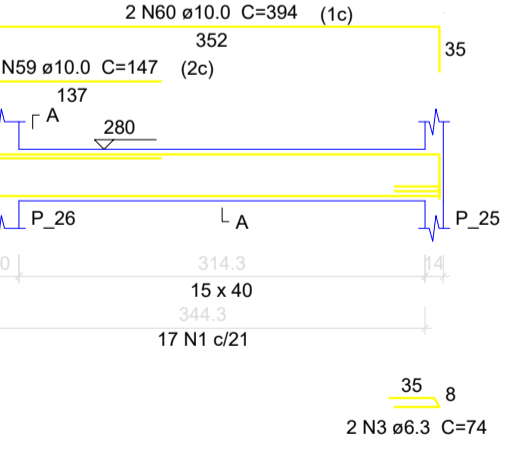
V32
ESC 1:50



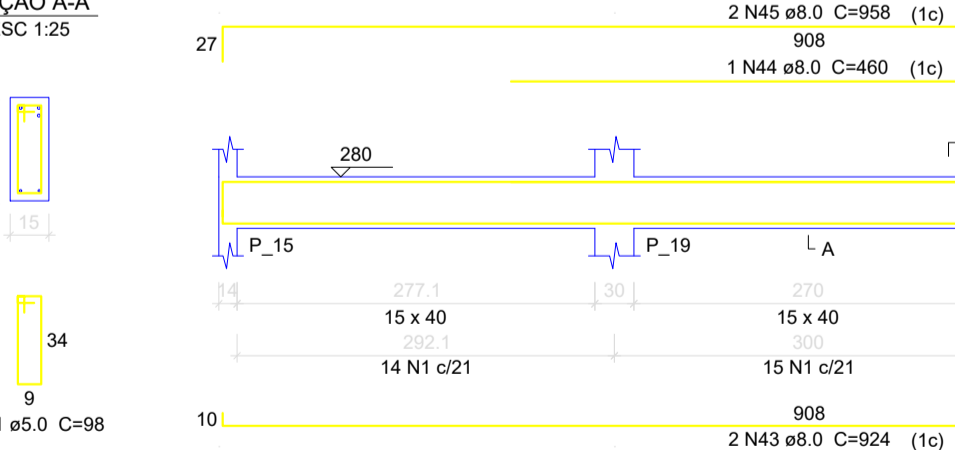
V33
ESC 1:50



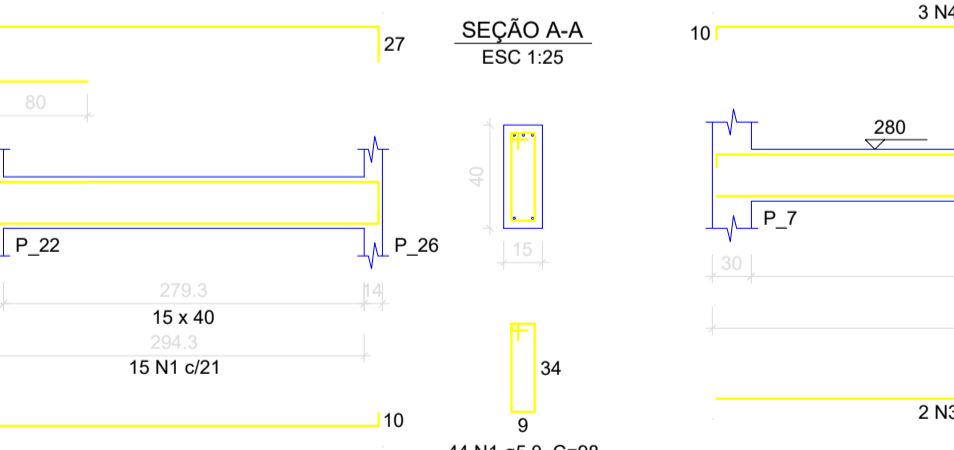
V33
ESC 1:50



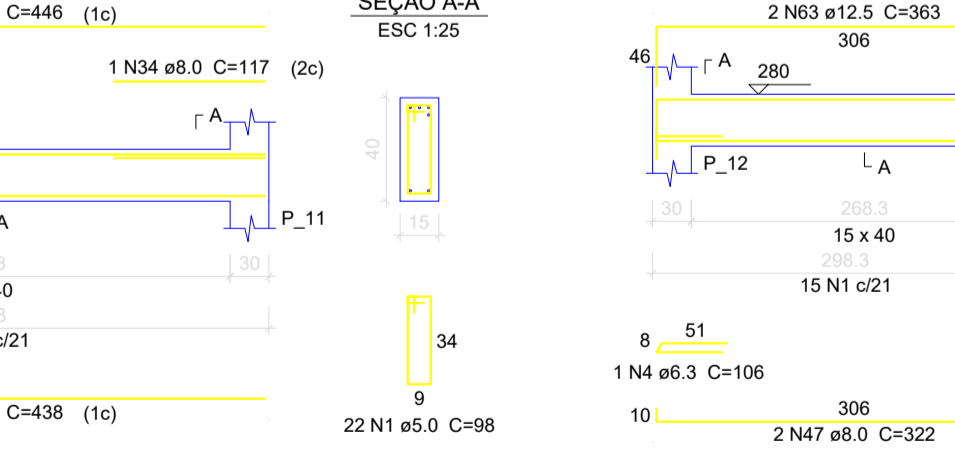
V34
ESC 1:50



V36
ESC 1:50



V37
ESC 1:50



Resumo do aço

CAÇO	DIAM (mm)	C.TOTAL (m)	PESO + 10% (kg)
CA50	6.3	7.8	2.1
	8.0	411.1	178.4
	10.0	115.3	78.2
	12.5	25	28.4
	16.0	6.2	10.8
CA60	5.0	522.8	88.6
CA50	295.8		
CA60	88.6		

Volume de concreto (C-25) = 6.73 m³
Área de forma = 106.49 m²

CLIENTE: PREFEITURA MUNICIPAL DE SENADOR JOSÉ PORFÍRIO CNPJ: 05.421.110/0001-40 OBRA: ESCOLA PADRÃO RURAL 04 SALAS VILA MOCOTÓ		EST-14/16
PROJETO DE ARQUITETURA		VERSÃO: 00
DESENHO: PLANTA BAIXA		INÍCIO: JUNHO/2022
ESCALA: 1 / 100		TÉRMINO: AGOSTO/ 2022
REVISÃO 00		CONTROLE ARQUIVO: 2022 V.03SJP
EQUIPE TÉCNICA DO PROJETO		
Responsável Projeto: Josiel Nascimento dos santos filho CREA 20.299 D/PA	Projetista e Coordenação Técnica: DEPARTAMENTO DE ENGENHARIA	Tec.Projetista CAD: